

Frequently Asked Questions

1. HOW DO I CONTRIBUTE FINANCIALLY?

You may make a financial gift of any size at anytime by writing a check to Calvary Christian Church and making a notation in the memo that it is for The Cairn. All gifts are tax deductible. We are also open to discussing other non-cash contributions including stocks, building materials, furnishings, equipment, and other services – though you will need to discuss the specific tax implications of such gifts with your accountant. You may drop your gifts in person or mail them to Calvary Christian Church, 15 Redwing Drive, Winchester, KY 40391.



2. WHY IS IT CALLED "THE CAIRN?"



For thousands of years, people around the world have erected piles of stones – cairns – to remember a special event or to mark a significant spot. In modern times, simple cairns are often used to mark trails for hikers and mountain bikers. Some cairns carry with them a tradition whereby hikers carry a stone up the mountain and place their “mark” on the cairn, joining together with all who have gone before and all who will come after.

With this inspiration in mind, The Cairn, a faith-based non-profit organization, is being established to add value to Clark County and to our world. We hope to encourage people to join their stories together through relationships and service.

At The Cairn:

- We desire this building & ministry to be established as a monument to what God is doing in and through a willing community of servant-minded people.
- We are committed to helping people in and around our community fully become who God created them to be by providing an environment that fosters relationship, communication, service, and creativity.
- We desire for individuals to be a part of something bigger and greater than themselves by connecting, sharing, and serving with us. Likewise – we will be striving to be a part of something greater than ourselves by expanding our impact into Clark County and around the world.



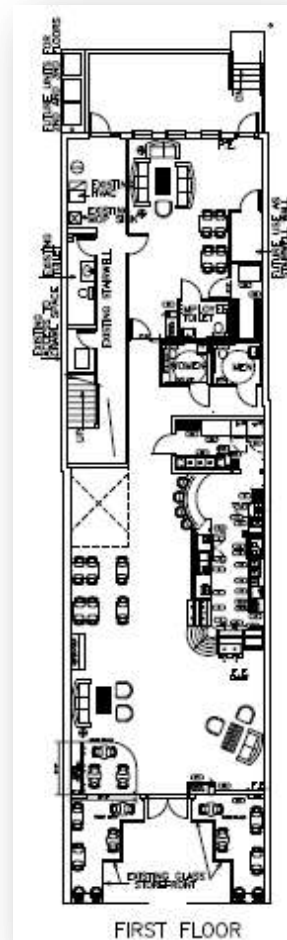
3. WHY MAKE THE FIRST FLOOR A COFFEE HOUSE?

This is a two-part answer:

A. We believe that in addition to needing a Teen Center, Clark County needs more “third places.” For all of us, our “first place” is where we sleep – it’s our home. Our “second place” is where we work and earn the money that pays for where we live. Our “third place” is an environment where we feel free to hang out relationally with friends. It is a place to socialize, a place to relax, a place to enjoy old friendships and build new ones. With a coffee house in downtown Winchester will be a great addition to our community – a much needed “third place” for young and old alike. (see more on this under Question #3)

B. We believe that the Teen Center needs an economic engine. There are MANY great causes in our community that our serving the needs of Clark County. These causes rely on the financial support of the Citizens of Clark County. It is our hope that once our space is completed – we will not have to continually come back to you for financial support – thus unintentionally siphoning off funds from other non-profits in our County. It is our intent that the full service coffee shop on the 1st floor (*in combination with the snack bar on the 2nd floor*) will serve as an economic engine to pay for the ongoing operational costs of the ministry. Whenever we mention this, people are quick to point out that new businesses are rarely profitable within the first few years – and we certainly recognize this. However, most new businesses open up with large amounts of debt. This will

not be true of “The Cairn.” On the day “The Cairn” opens, we will have a brand new space, all of our equipment, fully stocked inventory – and ZERO debt. Calvary Christian Church is currently carrying the facility and personnel costs, and will continue to do so until The Cairn can assume them. This means that The Cairn really does have an opportunity to stand on it’s own. In fact, it is our dream that not only will The Cairn be a self supporting operation – but it is our hope that, as a non-profit, it will eventually be able to contribute financially to other causes in our community and around the world. (*See Question #5 for additional details*)



4. WHAT WILL THE COFFEE HOUSE BE LIKE?

It will be a full service coffee house – providing a relational space in the middle of our community where we hope all will feel welcome. The “Cairn” will serve delicious “fair trade” coffee from around the world. This “Coffee with a cause” concept means that even the simple act of buying a cup of coffee will be helping to provide a sustainable living wage to a farmer & his family in a third world country. If the Lord blesses and allows us to become profitable, ALL of the profits of this endeavor will be ploughed back into other ministries and social causes in our community and around the world. In this space, we envision: comfortable seating & a relaxed atmosphere, wireless access, a private meeting room, occasional live music, intentional conversations, and lots of potential new friendships.

5. WHAT WILL THE TEEN CENTER BE LIKE?

The second floor will be home to a much needed *Community Teen Center*. We desire to create an environment that is diverse (*racially, culturally, economically*) and accessible for teens by providing a central location & unique programming. It is not our intent to replace or subvert any efforts by local churches, but rather, to come alongside and compliment those efforts by uniting our teens & by reaching the kids that our churches continue to struggle to reach. The Center will have very generous hours, and there will be large amounts of time when kids can just drop in and hang out, work on homework, or play games. These times, while unstructured, will ALWAYS be WELL supervised with fully trained and empowered volunteers and staff. There will also be creative programming and structured times in the facility, including various arts & enrichment programs, concerts, trips, etc.

TEEN CENTER STRATEGY:

Atraction – Young people will be attracted to the Teen Center for the environment, the opportunity to be with friends, the coffee bar and the unique programs & activities.

Building Relationships – Once they are here, the youth will find people who accept them as they are. Staff, volunteers and peers will create an inviting & welcoming community.

Connection – The youth will find ways to connect through discussion groups, Bible Studies, service projects, shared interests, special events & routine activities.

Discovering Purpose – Ultimately, the kids will meet Jesus and find a sense of life purpose.

6. WHO WILL OPERATE “THE CAIRN?”



Dan Jackson has been hired to serve as The Cairn Manager. Dan and his family moved to Winchester from Marysville, MI. Prior to joining The Cairn team, Dan was a high school English teacher for 10 years. He also served in part-time and volunteer ministry as a worship leader, interim pastor, youth mentor, and a variety of other capacities. Dan's background and training include a B.A. in English, a M.A. in Education, and a M.A. in Ministerial Leadership. Dan is currently being paid by Calvary Christian Church. When The Cairn can stand on its own, it will assume those responsibilities.

7. CAN I VOLUNTEER?

Would you please????!!! ANYONE can volunteer to serve at The Cairn. Our desire is for the community to “be a part.” As a non-profit, volunteer run organization we are ALWAYS looking for like-minded supporters who want to partner with us. For more information about how you can be a part of The Cairn community – please contact Dan at 859.744.0817 or dan@calvarychristian.net. Please understand, however, that every volunteer will be required to fill out an application, submit to a background check, and attend our volunteer training. We will have a small paid staff in the facility, but we will need lots of volunteers.



8. WHY IS THIS PROJECT SO EXPENSIVE?

We are renovating a 100 year old downtown building. There certainly are cheaper ways that we could have done this – but we felt strongly led to put The Cairn in this building. We believe there is significance to being on Main Street, in the center of our county, in the center of our communities largest City. We are across the street from the courthouse, near City Hall, at the crossroads of our community. But this has been challenging. We are changing the permitted use of this building from a retail location to a restaurant and public assembly space. As such, the entire building had to be updated to meet current state building codes. State inspectors have required us to add additional exits, a 2nd set of stairs, fire protection systems, new concrete footers, steel supports for the 2nd floor, accessible restrooms, and on and on the list goes.

9. WHAT WILL THE THIRD FLOOR EVENTUALLY BE USED FOR?

We are not renovating the third floor at this time, however, everything that we are currently doing to the 1st & 2nd floors is assuming that we will eventually move to the third floor. For instance, when the plumbers were installing the rough-in plumbing – we went ahead and had them run the lines to the third floor. Likewise – if you have 3 floors instead of two – the stairwells have to be wider. So, we’ve gone with the wider stair wells. Our assumption is that the teen center will be successful. And while there are no specific plans at this point – we assume that we will eventually expand the operations of the teen center to the third floor and double the useable space.

10. WHO INITIATED THIS PROJECT?

The leadership of Calvary Christian Church began discussing this project in late 2009. The leadership felt that God was calling them to create a Teen Center for all of Clark County. The vision was cast to the entire congregation in the spring of 2010, and wholeheartedly embraced. Calvary obtained use of the building at that time and began moving forward with construction plans. Though Calvary has been the driving force behind this project - we intend for the activities within this building to be a GIFT to our community. We strongly desire to promote Jesus Christ – not Calvary Christian Church. This is bigger than one church – it needs to be a community effort.

